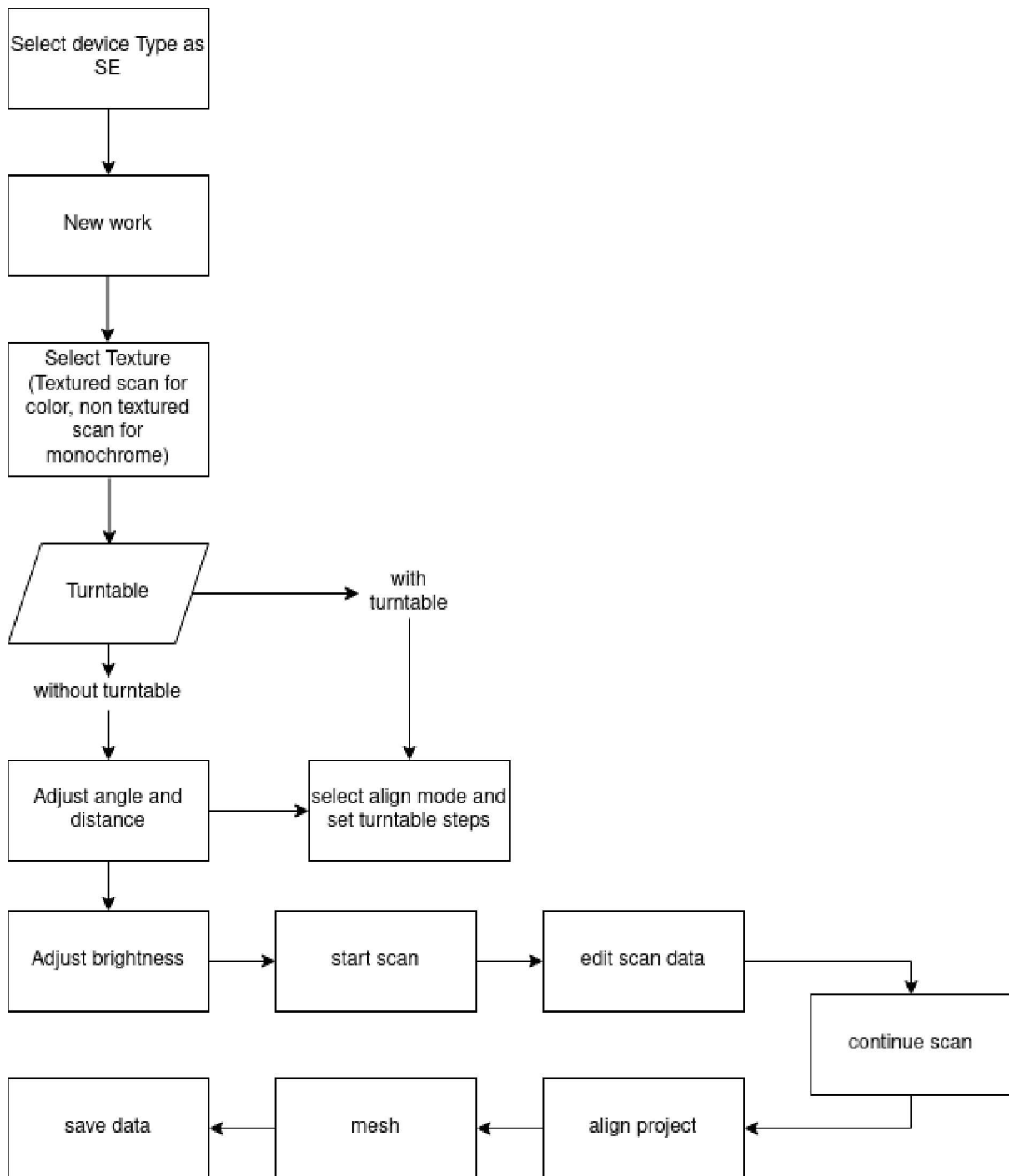


Quick Operation Guide



DO'S and DON'TS

- Extra light sources should not be there to disturb the light from the camera source, as this would result in poor scan.
- Size of the object should be greater than 30mm x 30mm x 30mm.
- Transparent objects like objects made of glass, or shiny objects like steel objects, and black objects like computer mouse cannot be scanned. Solution is to paint the object with any primary colour or to cover it in paper colour.
- Keep the brightness level where the object is properly visible any red spots on the object means over illumination, adjust brightness level to avoid red spots.
- If you want high detailing then increase the steps in which the turntable rotates, more steps result in detailed object capture.
- Camera calibration should be done when the lighting conditions change or the setup is moved.